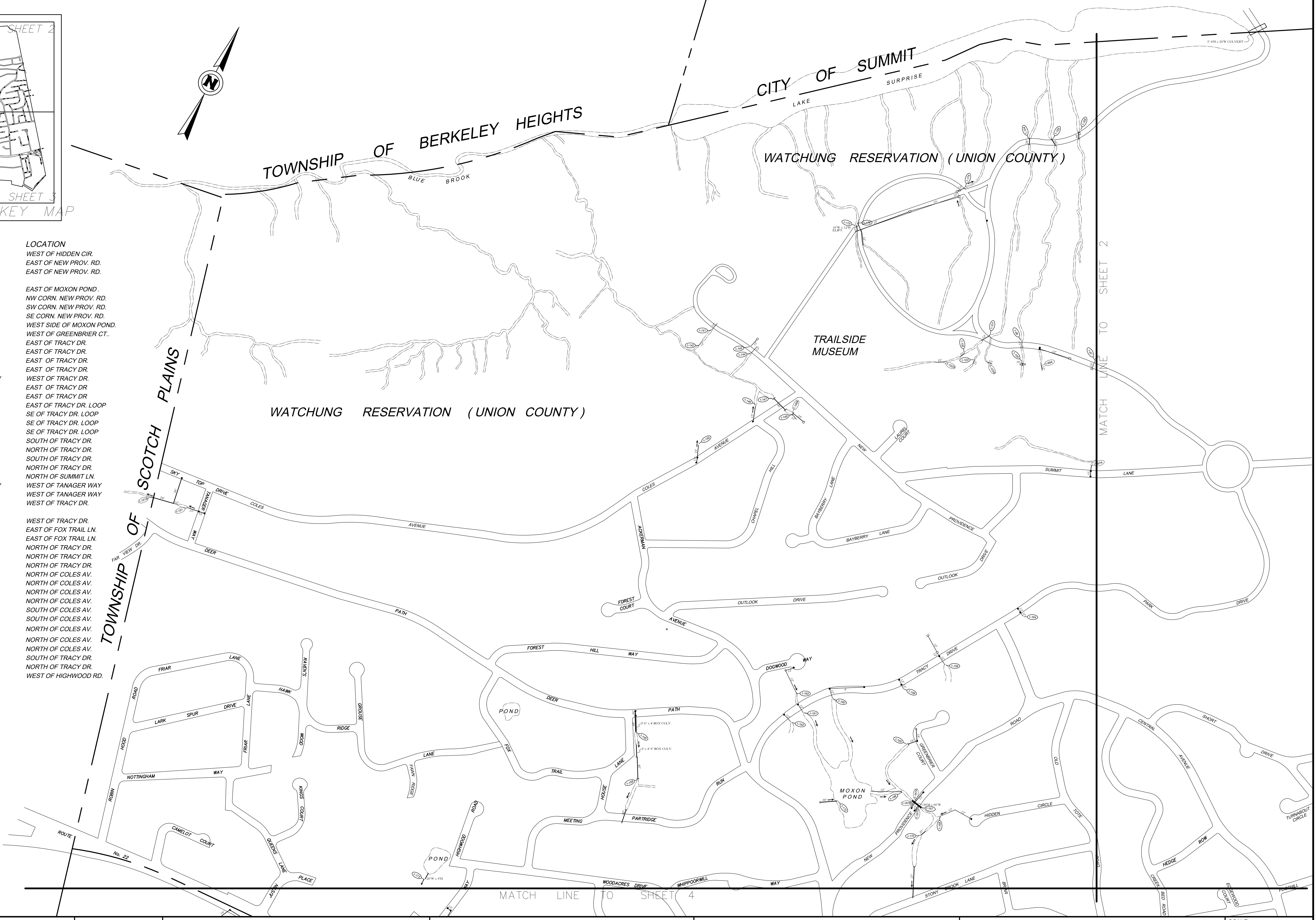
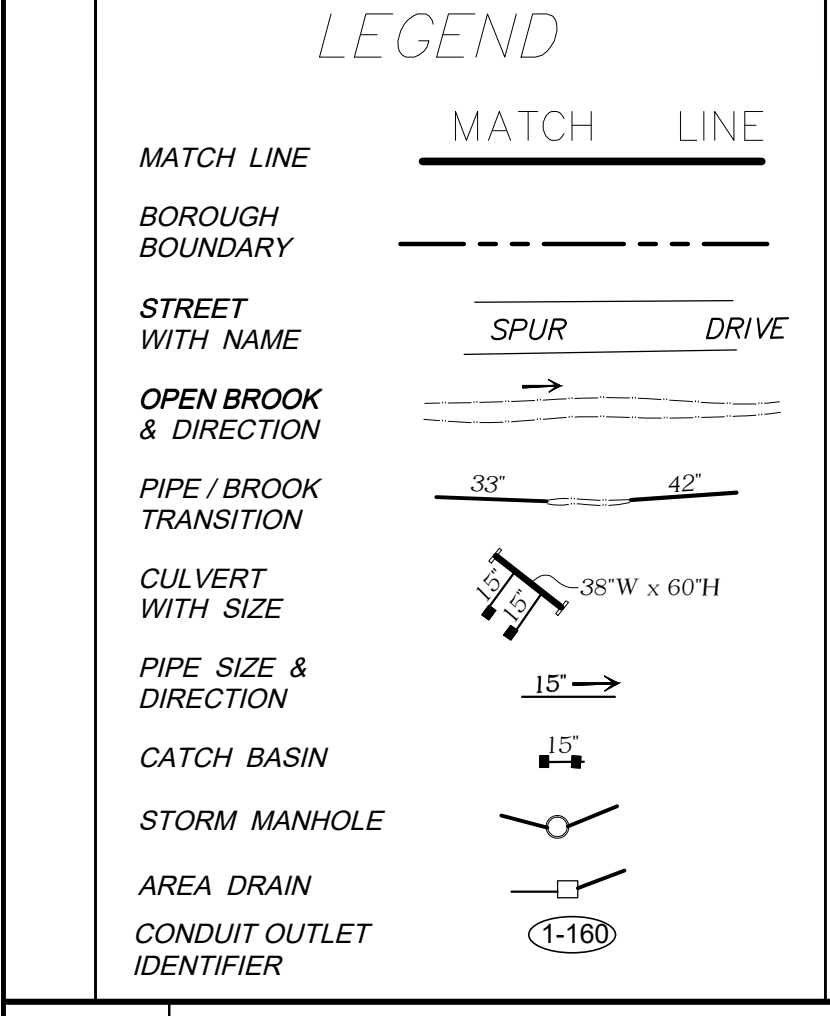


**OUTFALL TABLE**

#	TYPE	LAT./LONG.	LOCATION
1-168	12" Ø PIPE	40.678389°N, 74.363406°W	WEST OF HIDDEN CIR.
1-170	27" Ø PIPE	40.678056°N, 74.363389°W	EAST OF NEW PROV. RD.
1-167	38" W X 60" ELIPT. PIPE	40.678576°N, 74.363866°W	EAST OF NEW PROV. RD.
1-166	12" Ø PIPE	40.678446°N, 74.364473°W	EAST OF MOXON POND.
1-167A	15" Ø PIPE	40.678648°N, 74.363911°W	NW CORN. NEW PROV. RD.
1-167B	15" Ø PIPE	40.678529°N, 74.364005°W	SW CORN. NEW PROV. RD.
1-167C	15" Ø PIPE	40.678435°N, 74.363973°W	SE CORN. NEW PROV. RD.
1-172	30" Ø PIPE	40.677577°N, 74.365521°W	WEST SIDE OF MOXON POND.
1-165	18" Ø PIPE	40.679384°N, 74.365006°W	WEST OF GREENBRIER CT.
1-159	12" Ø PIPE	40.679910°N, 74.366180°W	EAST OF TRACY DR.
1-158	12" Ø PIPE	40.680795°N, 74.365810°W	EAST OF TRACY DR.
1-160	12" Ø PIPE	40.679119°N, 74.367401°W	EAST OF TRACY DR.
1-161	12" Ø PIPE	40.678427°N, 74.367584°W	EAST OF TRACY DR.
1-162	12" Ø PIPE	40.678533°N, 74.367899°W	WEST OF TRACY DR.
1-163	12" Ø PIPE	40.677987°N, 74.367692°W	EAST OF TRACY DR.
1-164	12" Ø PIPE	40.682971°N, 74.365050°W	EAST OF TRACY DR.
1-101	12" Ø PIPE	40.686061°N, 74.370414°W	EAST OF TRACY DR. LOOP
1-102	15" Ø PIPE	40.685640°N, 74.370455°W	SE OF TRACY DR. LOOP
1-102A	15" Ø PIPE	40.685714°N, 74.370346°W	SE OF TRACY DR. LOOP
1-103	15" Ø PIPE	40.685847°N, 74.370164°W	SE OF TRACY DR. LOOP
1-100	18" Ø PIPE	40.686131°N, 74.369332°W	SOUTH OF TRACY DR.
1-99	12" Ø PIPE	40.686306°N, 74.369555°W	NORTH OF TRACY DR.
1-99A	12" Ø PIPE	40.686264°N, 74.369251°W	SOUTH OF TRACY DR.
1-97	12" Ø PIPE	40.686556°N, 74.369226°W	NORTH OF TRACY DR.
1-97A	15" Ø PIPE	40.685098°N, 74.366386°W	NORTH OF SUMMIT LN.
1-151	15" Ø PIPE	40.673719°N, 74.382079°W	WEST OF TANAGER WAY
1-151A	24" Ø PIPE	40.673349°N, 74.383086°W	WEST OF TANAGER WAY
1-175	12" H X 18" W ELIPT. PIPE	40.686206°N, 74.374693°W	WEST OF TRACY DR.
1-176	12" Ø PIPE	40.686201°N, 74.374664°W	WEST OF TRACY DR.
1-155	48" Ø PIPE	40.675992°N, 74.370376°W	EAST OF FOX TRAIL LN.
1-156	42" Ø PIPE	40.675561°N, 74.369523°W	EAST OF FOX TRAIL LN.
1-104	24" Ø PIPE	40.689297°N, 74.372759°W	NORTH OF TRACY DR.
1-105	24" Ø PIPE	40.689518°N, 74.372287°W	NORTH OF TRACY DR.
1-106	24" Ø PIPE	40.689919°N, 74.371684°W	NORTH OF TRACY DR.
1-141	12" Ø PIPE	40.682535°N, 74.375734°W	NORTH OF COLES AV.
1-142	12" Ø PIPE	40.682309°N, 74.375743°W	NORTH OF COLES AV.
1-145	12" Ø PIPE	40.682630°N, 74.374361°W	NORTH OF COLES AV.
1-144	12" Ø PIPE	40.682567°N, 74.374293°W	NORTH OF COLES AV.
1-149	15" Ø PIPE	40.682086°N, 74.372715°W	SOUTH OF COLES AV.
1-149A	18" Ø PIPE	40.682150°N, 74.372707°W	SOUTH OF COLES AV.
1-147	60" Ø PIPE	40.682231°N, 74.373054°W	NORTH OF COLES AV.
1-146	15" Ø PIPE	40.681786°N, 74.373176°W	NORTH OF COLES AV.
1-150	18" Ø PIPE	40.680593°N, 74.373650°W	NORTH OF COLES AV.
1-103A	12" Ø PIPE	40.685847°N, 74.370164°W	SOUTH OF TRACY DR.
1-174	12" Ø PIPE	40.687821°N, 74.373248°W	NORTH OF TRACY DR.
1-173	20" X 8" SPILLWAY	40.671651°N, 74.372110°W	WEST OF HIGHWOOD RD.



REVISIONS	DESIGNED BY	<b>MICHAEL DISKO, P. E.</b> PROFESSIONAL ENGINEER NEW JERSEY LICENSE No. 12950 MOUNTAINSIDE BOROUGH ENGINEER <i>MICHAEL DISKO 12/21/2020</i>	<b>BOROUGH OF MOUNTAINSIDE</b> 1385 ROUTE 22 MOUNTAINSIDE, NEW JERSEY 07092	<b>MOUNTAINSIDE BOROUGH</b> ENGINEER	<b>OUTFALL LOCATION MAP</b> MOUNTAINSIDE BOROUGH UNION COUNTY, NEW JERSEY	SCALE
	DRAWN BY					SCALE: 1" = 300'
	CHECKED BY					DATE
	M.D.					DECEMBER 2020
						SHEET NUMBER
						1 OF 4